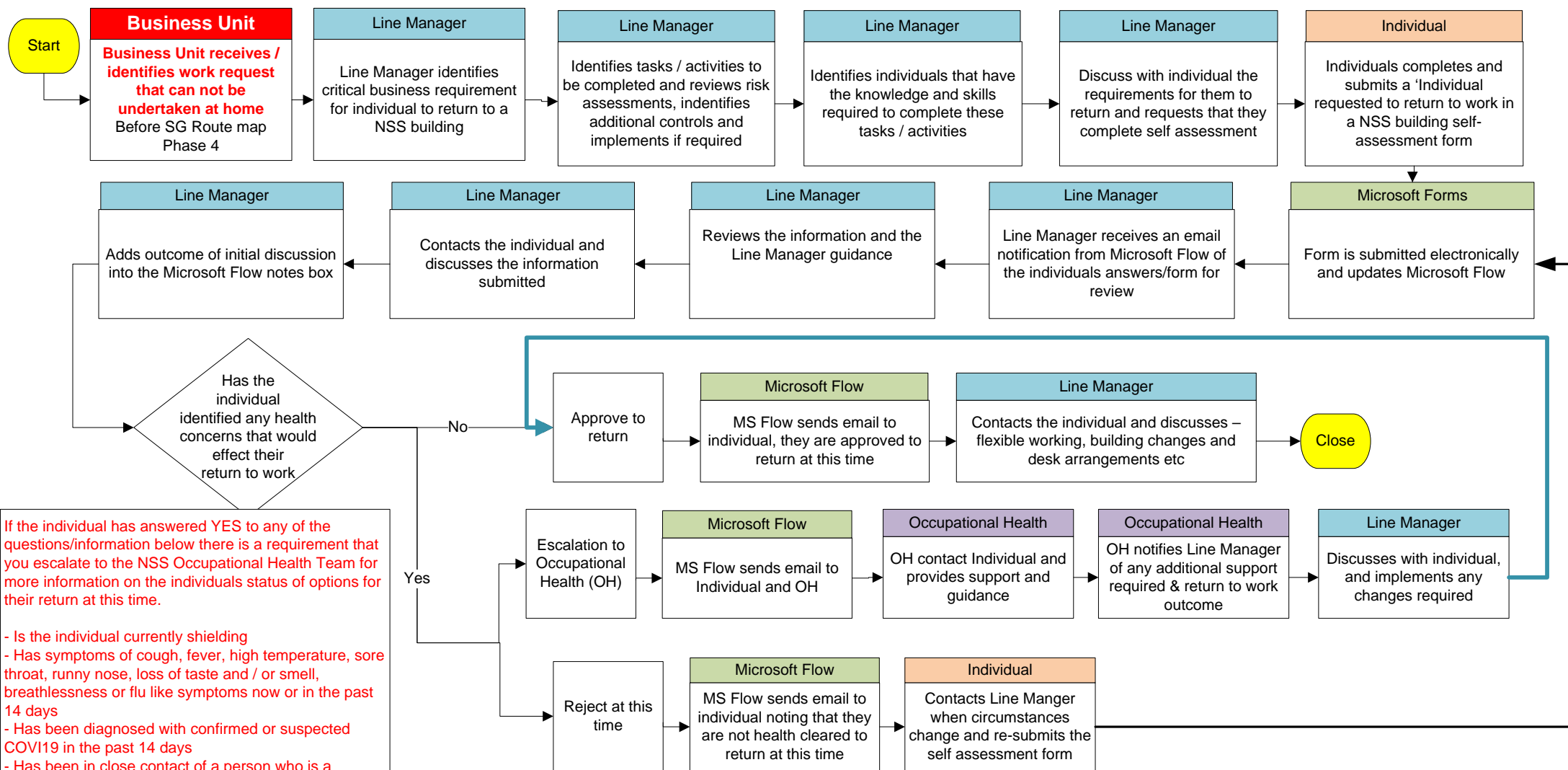


COVID19 – Individuals returning back into a NSS building through a business need process map



If the individual has answered YES to any of the questions/information below there is a requirement that you escalate to the NSS Occupational Health Team for more information on the individuals status of options for their return at this time.

- Is the individual currently shielding
- Has symptoms of cough, fever, high temperature, sore throat, runny nose, loss of taste and / or smell, breathlessness or flu like symptoms now or in the past 14 days
- Has been diagnosed with confirmed or suspected COVID19 in the past 14 days
- Has been in close contact of a person who is a confirmed or suspected case of COVID19 in the past 14 days
- Has been advised by a doctor to self isolate
- Individual has requested to be contacted by occupational health

COVID19 Managers Risk Assessment:

- Was a Managers COVID19 risk assessment undertaken before lockdown
- Has the individuals circumstances changed that they now require a COVID19 Managers risk assessment to be completed

Information Governance - Who will see the information?

- You as a individual
- Your line manger
- NSS Occupational Health Team / HWL Programme Manager (Process Manager)